

Vol. 100

No. 100,000

Ordinance by Trustees to

M A P

4. The undersigned Trustees of Broadacres, an addition to the City of Houston, Harris County, Texas, do hereby approve and adopt this plan, and will file same for record in the Map Book of Harris County.

Joe A. Baker, Jr.
John F. Blalock
Walter A. Chiles
Purdy Baker
E. A. Cleveland, Jr.

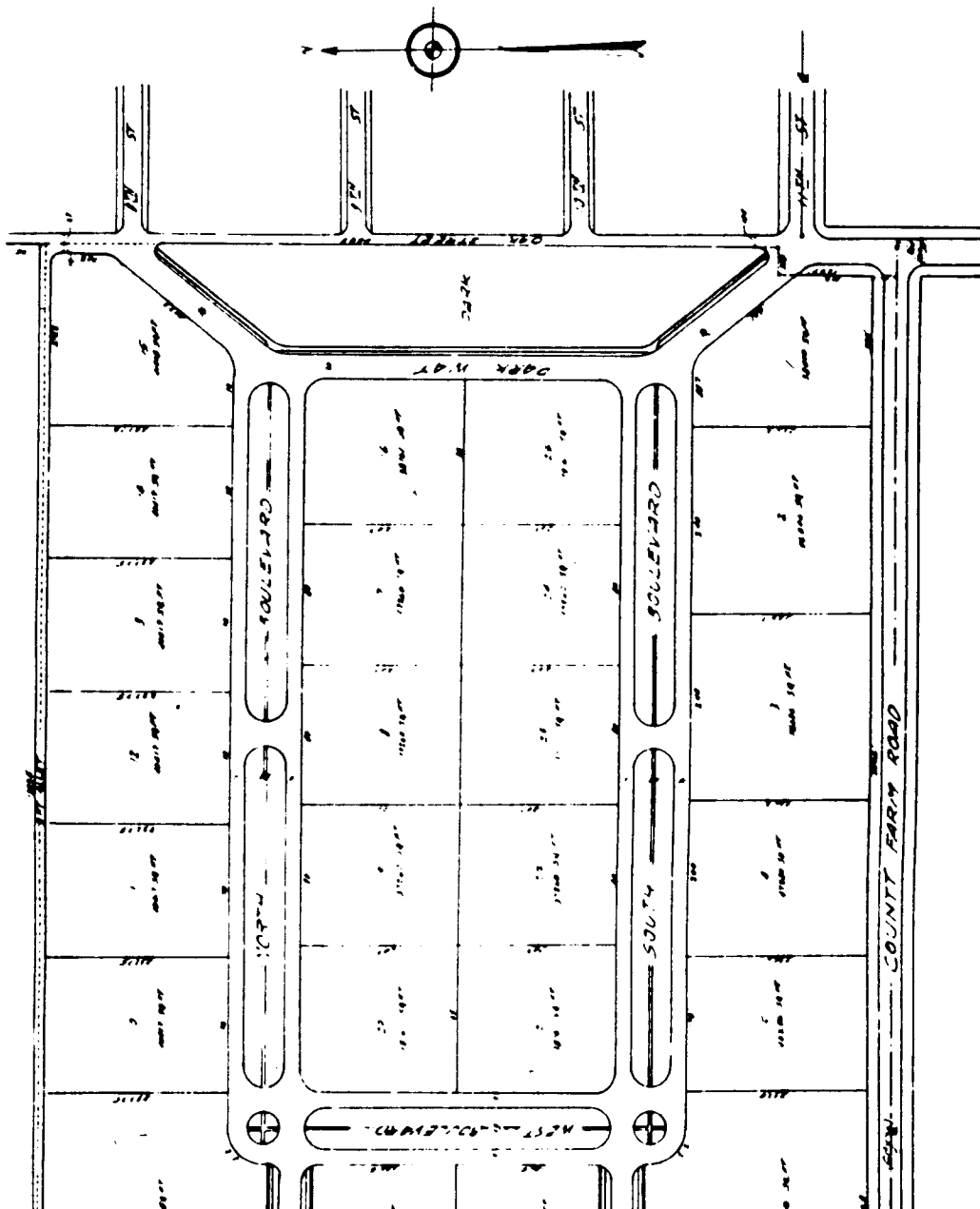
State of Texas
County of Harris.

Before me, the undersigned authority, on this day personally appeared E. A. Cleveland, Jr., John F. Blalock, Walter A. Chiles, Purdy Baker, and Joe A. Baker, Jr., known to me to be the persons whose names are subscribed to the foregoing instrument, and acknowledged to me that they executed the same for the purposes and considerations therein expressed. Given under my hand and seal of office, this 10th day of February A. D. 1928.

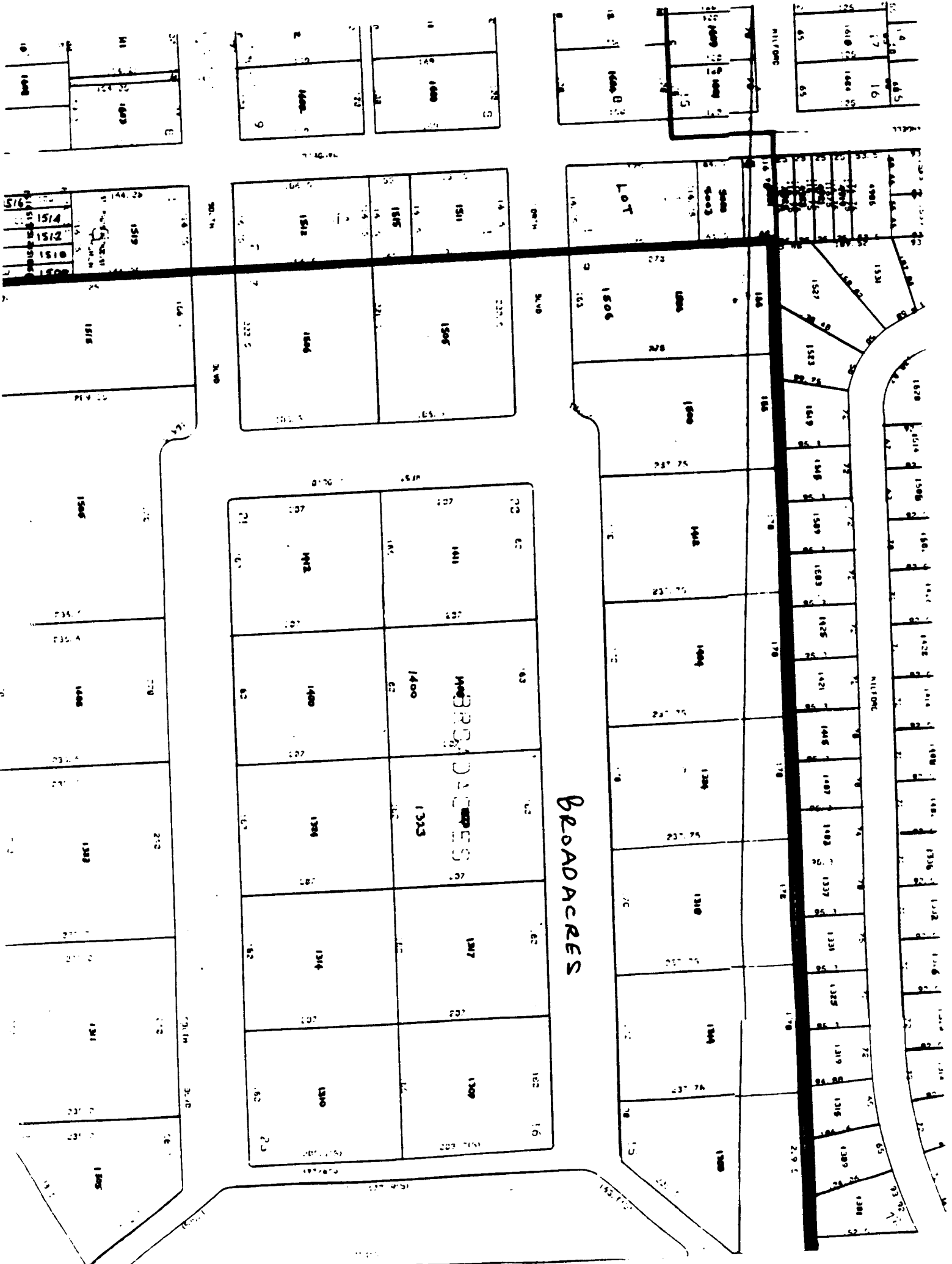
6/20 map

Will A. Jourd, Notary Public, in and for Harris County, Texas. (Seal)

Filed for record Feb. 20, 1928 at 8:48 o'clock P.M. Recorded Mar. 6, 1928 at 9:20 o'clock A.M.
Clerk County Court, Harris County, Texas. By _____



PLAT OF
BROADACRES
AN ADDITION TO
THE CITY OF HOUSTON, TEX.
JAN 24 1928
ALBERT BROWN



BROADACRES

MILLCREEK

MILLCREEK

LOT

1519

1518

1505

1405

1302

1301

1305

1514

1512

1510

1509

1406

1404

1303

1304

1306

1511

1508

1507

1506

1407

1403

1305

1307

1309

1512

1509

1508

1507

1408

1402

1306

1308

1310

1511

1508

1507

1506

1409

1401

1307

1309

1311

1512

1509

1508

1507

1410

1400

1308

1310

1312

1511

1508

1507

1506

1411

1400

1309

1311

1313

1512

1509

1508

1507

1412

1400

1310

1312

1314

1511

1508

1507

1506

1413

1400

1311

1313

1315

1512

1509

1508

1507

1414

1400

1312

1314

1316

1511

1508

1507

1506

1415

1400

1313

1315

1317

1512

1509

1508

1507

1416

1400

1314

1316

1318

1511

1508

1507

1506

1417

1400

1315

1317

1319

1512

1509

1508

1507

1418

1400

1316

1318

1320

1511

1508

1507

1506

1419

1400

1317

1319

1321

1512

1509

1508

1507

1420

1400

1318

1320

1322

1511

1508

1507

1506

1421

1400

1319

1321

1323

1512

1509

1508

1507

1422

1400

1320

1322

1324