

STATE OF TEXAS
COUNTY OF HARRIS

WE, Northampton Place Limited hereinafter, acting by and through Eric Rosenberg, President of Northampton Place Development Corporation, L.L.C., a General Partner of Northampton Place Limited Partnership, L.L.C., a General Partner of Northampton Place Limited Partnership, L.L.C., as the undersigned authority, on this day personally appeared Eric Rosenberg, President of Northampton Place Development Corporation, L.L.C., General Partner of Northampton Place Limited Partnership, L.L.C., and duly recorded on NOV. 29, 1998, at 9:00 o'clock, P.M., and duly recorded on NOV. 29, 1998, at 9:00 o'clock, A.M. and at file number 333023.

IN WITNESS WHEREOF, Northampton Place Development Corporation, L.L.C., General Partner of Northampton Place Limited Partnership, L.L.C., has caused this instrument to be signed by its President, Eric Rosenberg, and this instrument to be sealed and attested by its Secretary, Robert Washley, Vice President of Northampton Place Development Corporation, L.L.C., General Partner of Northampton Place Limited Partnership, L.L.C., and duly recorded on NOV. 29, 1998, at 9:00 o'clock, P.M., and duly recorded on NOV. 29, 1998, at 9:00 o'clock, A.M. and at file number 333023.

IN WITNESS WHEREOF, Northampton Place Development Corporation, L.L.C., General Partner of Northampton Place Limited Partnership, L.L.C., has caused this instrument to be signed by its Secretary, Robert Washley, Vice President of Northampton Place Development Corporation, L.L.C., General Partner of Northampton Place Limited Partnership, L.L.C., and duly recorded on NOV. 29, 1998, at 9:00 o'clock, P.M., and duly recorded on NOV. 29, 1998, at 9:00 o'clock, A.M. and at file number 333023.

IN WITNESS WHEREOF, Northampton Place Development Corporation, L.L.C., General Partner of Northampton Place Limited Partnership, L.L.C., has caused this instrument to be signed by its Secretary, Robert Washley, Vice President of Northampton Place Development Corporation, L.L.C., General Partner of Northampton Place Limited Partnership, L.L.C., and duly recorded on NOV. 29, 1998, at 9:00 o'clock, P.M., and duly recorded on NOV. 29, 1998, at 9:00 o'clock, A.M. and at file number 333023.

IN WITNESS WHEREOF, Northampton Place Development Corporation, L.L.C., General Partner of Northampton Place Limited Partnership, L.L.C., has caused this instrument to be signed by its Secretary, Robert Washley, Vice President of Northampton Place Development Corporation, L.L.C., General Partner of Northampton Place Limited Partnership, L.L.C., and duly recorded on NOV. 29, 1998, at 9:00 o'clock, P.M., and duly recorded on NOV. 29, 1998, at 9:00 o'clock, A.M. and at file number 333023.

IN WITNESS WHEREOF, Northampton Place Development Corporation, L.L.C., General Partner of Northampton Place Limited Partnership, L.L.C., has caused this instrument to be signed by its Secretary, Robert Washley, Vice President of Northampton Place Development Corporation, L.L.C., General Partner of Northampton Place Limited Partnership, L.L.C., and duly recorded on NOV. 29, 1998, at 9:00 o'clock, P.M., and duly recorded on NOV. 29, 1998, at 9:00 o'clock, A.M. and at file number 333023.

IN WITNESS WHEREOF, Northampton Place Development Corporation, L.L.C., General Partner of Northampton Place Limited Partnership, L.L.C., has caused this instrument to be signed by its Secretary, Robert Washley, Vice President of Northampton Place Development Corporation, L.L.C., General Partner of Northampton Place Limited Partnership, L.L.C., and duly recorded on NOV. 29, 1998, at 9:00 o'clock, P.M., and duly recorded on NOV. 29, 1998, at 9:00 o'clock, A.M. and at file number 333023.

GIVEN UNDER MY HAND AND SEAL OF OFFICE, this 11 day of Oct., 1998.

STATE OF TEXAS
COUNTY OF HARRIS

BEFORE ME, the undersigned authority, on this day personally appeared Eric Rosenberg, President of Northampton Place Development Corporation, L.L.C., General Partner of Northampton Place Limited Partnership, L.L.C., and duly recorded on NOV. 29, 1998, at 9:00 o'clock, P.M., and duly recorded on NOV. 29, 1998, at 9:00 o'clock, A.M. and at file number 333023.

BEFORE ME, the undersigned authority, on this day personally appeared Robert Washley, Vice President of Northampton Place Development Corporation, L.L.C., General Partner of Northampton Place Limited Partnership, L.L.C., and duly recorded on NOV. 29, 1998, at 9:00 o'clock, P.M., and duly recorded on NOV. 29, 1998, at 9:00 o'clock, A.M. and at file number 333023.

BEFORE ME, the undersigned authority, on this day personally appeared Robert Washley, Vice President of Northampton Place Development Corporation, L.L.C., General Partner of Northampton Place Limited Partnership, L.L.C., and duly recorded on NOV. 29, 1998, at 9:00 o'clock, P.M., and duly recorded on NOV. 29, 1998, at 9:00 o'clock, A.M. and at file number 333023.

GIVEN UNDER MY HAND AND SEAL OF OFFICE, this 11 day of October, 1998.



BEFORE ME, the undersigned authority, on this day personally appeared Robert Washley, Vice President of Northampton Place Development Corporation, L.L.C., General Partner of Northampton Place Limited Partnership, L.L.C., and duly recorded on NOV. 29, 1998, at 9:00 o'clock, P.M., and duly recorded on NOV. 29, 1998, at 9:00 o'clock, A.M. and at file number 333023.



GIVEN UNDER MY HAND AND SEAL OF OFFICE, this 11 day of October, 1998.

FILED
21673
21673
21673

FILED
21673
21673
21673

FILED
21673
21673
21673

FILED
21673
21673
21673

FILED
21673
21673
21673

FILED
21673
21673
21673

FILED
21673
21673
21673

FILED
21673
21673
21673

FILED
21673
21673
21673

FILED
21673
21673
21673

FILED
21673
21673
21673

FILED
21673
21673
21673

FILED
21673
21673
21673

FILED
21673
21673
21673

FILED
21673
21673
21673

FILED
21673
21673
21673

FILED
21673
21673
21673

FILED
21673
21673
21673

FILED
21673
21673
21673

FILED
21673
21673
21673

FILED
21673
21673
21673

FILED
21673
21673
21673

FILED
21673
21673
21673

FILED
21673
21673
21673

FILED
21673
21673
21673

FILED
21673
21673
21673

FILED
21673
21673
21673

FILED
21673
21673
21673

FILED
21673
21673
21673

FILED
21673
21673
21673

FILED
21673
21673
21673

FILED
21673
21673
21673

FILED
21673
21673
21673

FILED
21673
21673
21673

FILED
21673
21673
21673

FILED
21673
21673
21673

FILED
21673
21673
21673

FILED
21673
21673
21673

FILED
21673
21673
21673

FILED
21673
21673
21673

FILED
21673
21673
21673

FILED
21673
21673
21673

FILED
21673
21673
21673

FILED
21673
21673
21673

FILED
21673
21673
21673

FILED
21673
21673
21673

FILED
21673
21673
21673

FILED
21673
21673
21673

FILED
21673
21673
21673

FILED
21673
21673
21673

FILED
21673
21673
21673

FILED
21673
21673
21673

FILED
21673
21673
21673

FILED
21673
21673
21673

FILED
21673
21673
21673

FILED
21673
21673
21673

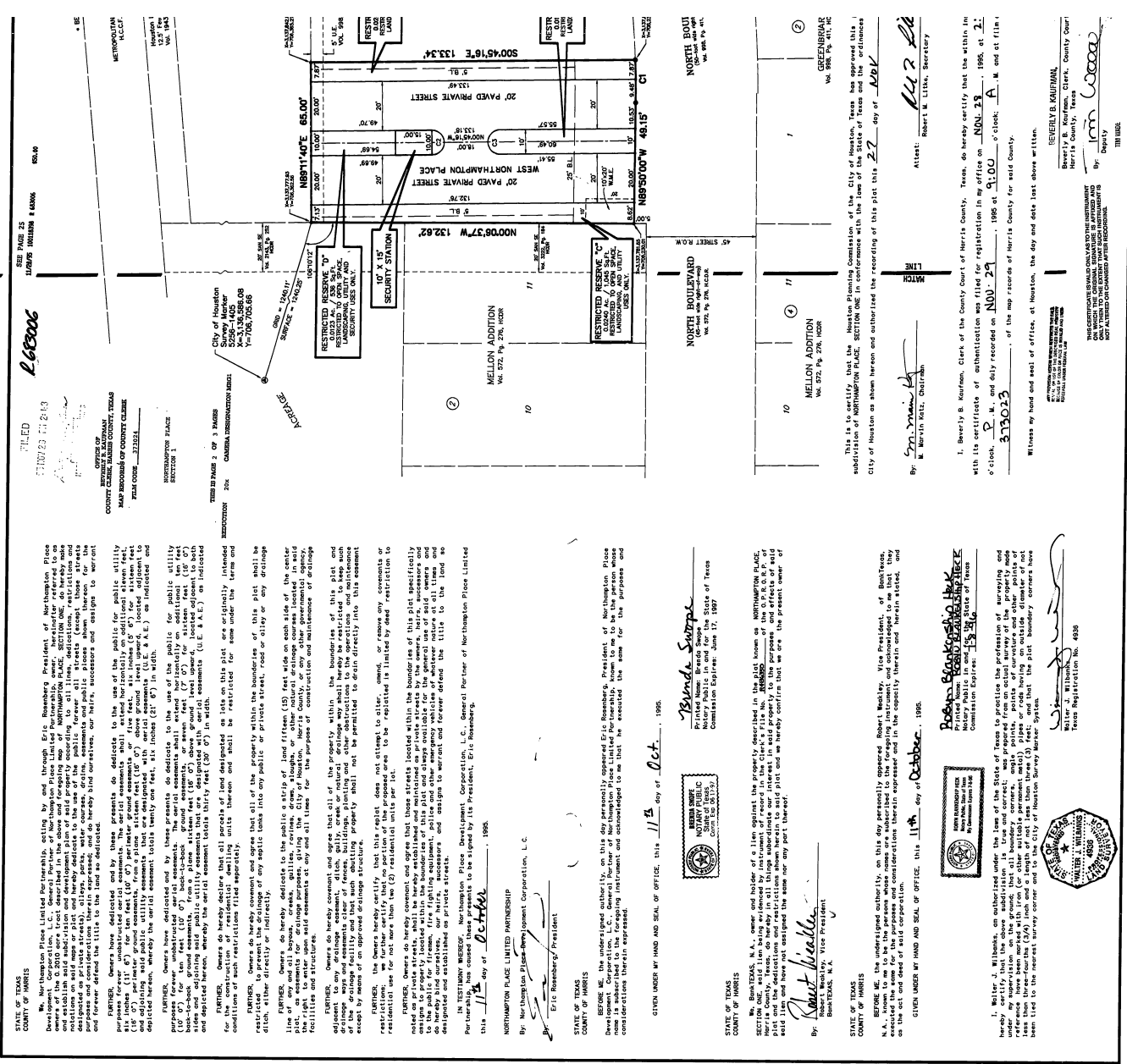
FILED
21673
21673
21673

FILED
21673
21673
21673

FILED
21673
21673
21673

FILED
21673
21673
21673

FILED
21673
21673
21673



This is to certify that the Houston Planning Commission of the City of Houston, Texas has approved this subdivision of NORTHAMPTON PLACE, SECTION ONE in conformance with the laws of the State of Texas and the City of Houston as shown hereon and authorized the recording of this plat this 27 day of NOV.

By [Signature]
Mayor Martin Galt, Chairman

By [Signature]
Robert M. Liska, Secretary

I, Beverly B. Karmann, Clerk of the County Court of Harris County, Texas, do hereby certify that the within in with its certificate of authentication was filed for registration in my office on NOV. 29, 1998, at 2: o'clock, P.M., and duly recorded on NOV. 29, 1998, at 9:00 o'clock, A.M. and at file number 333023.

Witness my hand and seal of office, at Houston, the day and date last above written.

By [Signature]
Beverly B. Karmann, County Clerk
Harris County, Texas

ED
2-68206

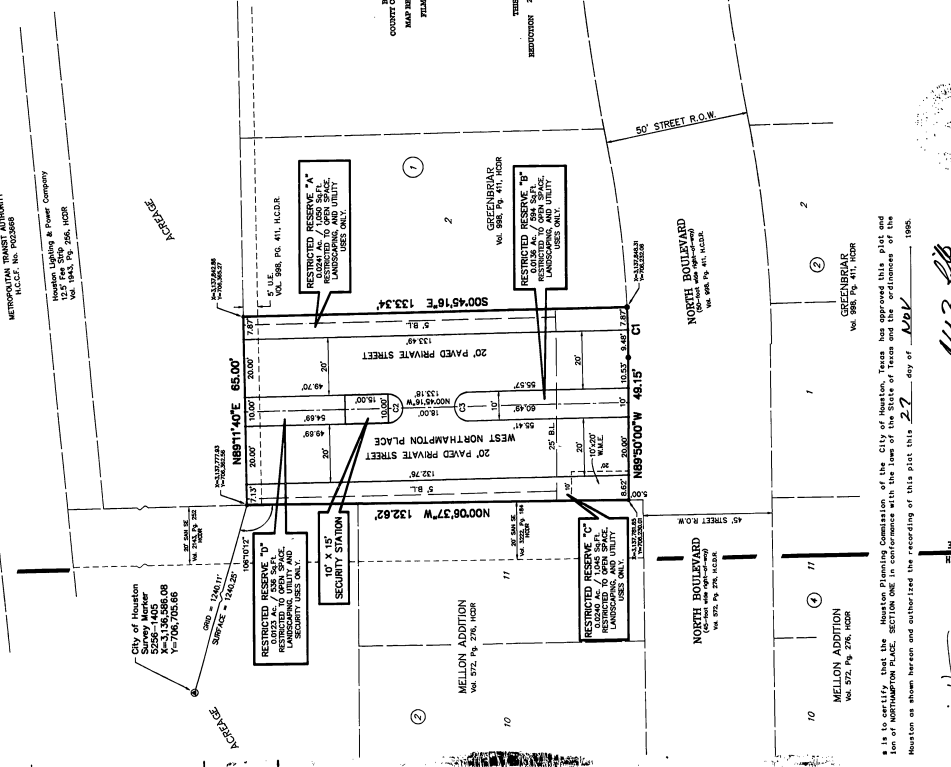
SEE PAGE 24

100' X 15' SECURITY STATION

City of Houston
20000
M-31,36,366.08
1-7-80, 1-7-81, 1-7-82

METROPOLITAN TRANSIT AUTHORITY
H.C.C.P. No. 142-289
Houston Railway & Power Company
1000
No. 144, Pp. 206, 1028

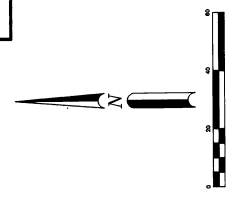
* BEARING BASES FOR COORDINATES, SEE NOTE #2



OFFICE OF
COUNTY CLERK, HARRIS COUNTY, TEXAS
MAP RECORDED BY COUNTY CLERK
PLAT CODE 273023

NORTHAMPTON PLACE
SECTION 1

THIS IS MAP 3 OF 2 MAPS
SUBSECTION 206
GENERAL LAND WARRANT 2821



CURVE DATA

CHORD	ARC	ANGLE	AREA
100.00	100.00	90.00	7853.98
150.00	150.00	135.00	15884.25
200.00	200.00	180.00	31370.42
250.00	250.00	225.00	47856.59
300.00	300.00	270.00	65342.76
350.00	350.00	315.00	83828.93
400.00	400.00	360.00	103315.10

- GENERAL NOTES
- "R" indicates "Utility Reserve".
 - "E" indicates "Building Line".
 - "S" or "SE" indicates "Sanitary Sewer Easement".
 - "W" or "E" indicates "Water Meter Easement".
 - Corner 2528 - 1400 shown herein (T&M 27). Bearing orientation of this corner is as shown on the plat. This corner is a published bearing station on the METRO Corridor shown herein. A published bearing station is defined as a station on a line of sight which is marked by METRO for a 2-3/4" square foot cross-section within 1/4" of the centerline of the line. The station is to be located within 1/4" of the centerline of the line. Stations shown herein are not covered by this plat. Stations applying a scale factor of 0.9999999 to obtain grid distances are based on the found monumentation of the plat. Instrument recorded in Volume 4218, Page 452, H.C.C.R.

NORTHAMPTON PLACE SECTION ONE

A REPLAT OF LOT 1, BLOCK 1 OF GREENBRIAR, VOL. 988, PG. 411, H.C.D.R. BEING A SUBDIVISION OF 0.2010 ACRES LOCATED IN THE A.C. REYNOLDS SURVEY, A-61 CITY OF HOUSTON, HARRIS COUNTY, TEXAS

SCALE: 1" = 20'
0 LOTS 1 BLOCK
DATE: SEPTEMBER, 1995
4 RESERVES

BY: **BROWN & GAY**
INCORPORATED
11400 HOUSTON, SUITE 700
HOUSTON, TEXAS 77077
(713) 558-9700



I certify that this plat lies within the City Limits.

Tom A. Henry, P.E., COUNTY ENGINEER
By: *[Signature]*

VERNON G. HENRY AND ASSOCIATES, INC.
PLANNING CONSULTANTS & LANDSCAPE ARCHITECTS
6900 MEMORIAL PARKWAY, SUITE 700
HOUSTON, TEXAS 77077
(713) 862-2113

I, the undersigned, Clerk of the County Court of Harris County, Texas, do hereby certify that the within instrument is a true and correct copy of the original as recorded in my office on NOV. 23, 1995, at 3:45 P. M., and duly recorded on NOV. 29, 1995, at 3:00 o'clock, A. M. and at file code no. 313013 of the map records of Harris County for said County.

Attest: *[Signature]*
Robert M. Little, Secretary

Beverly B. Kaufman, Clerk of the County Court of Harris County, Texas, do hereby certify that the within instrument is a true and correct copy of the original as recorded in my office on NOV. 23, 1995, at 3:45 P. M., and duly recorded on NOV. 29, 1995, at 3:00 o'clock, A. M. and at file code no. 313013 of the map records of Harris County for said County.

Attest: *[Signature]*
Beverly B. Kaufman, Clerk, County Court
Harris County, Texas
By: *[Signature]*
Deputy

THIS INSTRUMENT IS VALID ONLY AS TO THE INSTRUMENT AND THE PARTS THEREOF WHICH ARE RECORDED IN THIS PLAT. IT IS NOT VALID AS TO ANY OTHER PARTS THEREOF.