

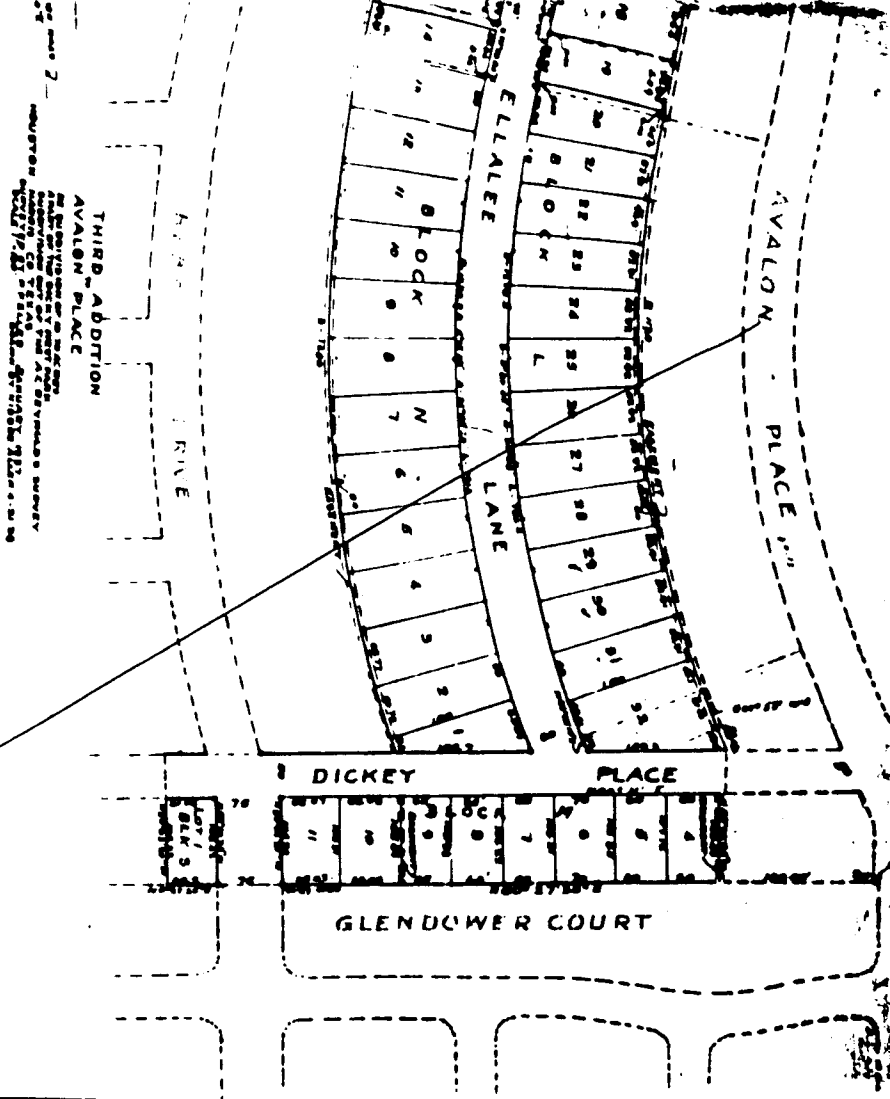
...and to hereby waive any claim for damage occasioned
 ...of the surface to conform to such grade.
 ...at Houston, Texas, this 20 day of June, 1936.
 William H. Dickey.

Before me, the undersigned authority, on this day
 personally appeared Wm. H. Dickey, known to me to be
 the person whose name is subscribed to the foregoing instrument, and
 acknowledged to me that he executed the same for the purposes and consideration
 therein expressed.
 Given under my hand and seal of office, this the
 20th day of June, 1936.

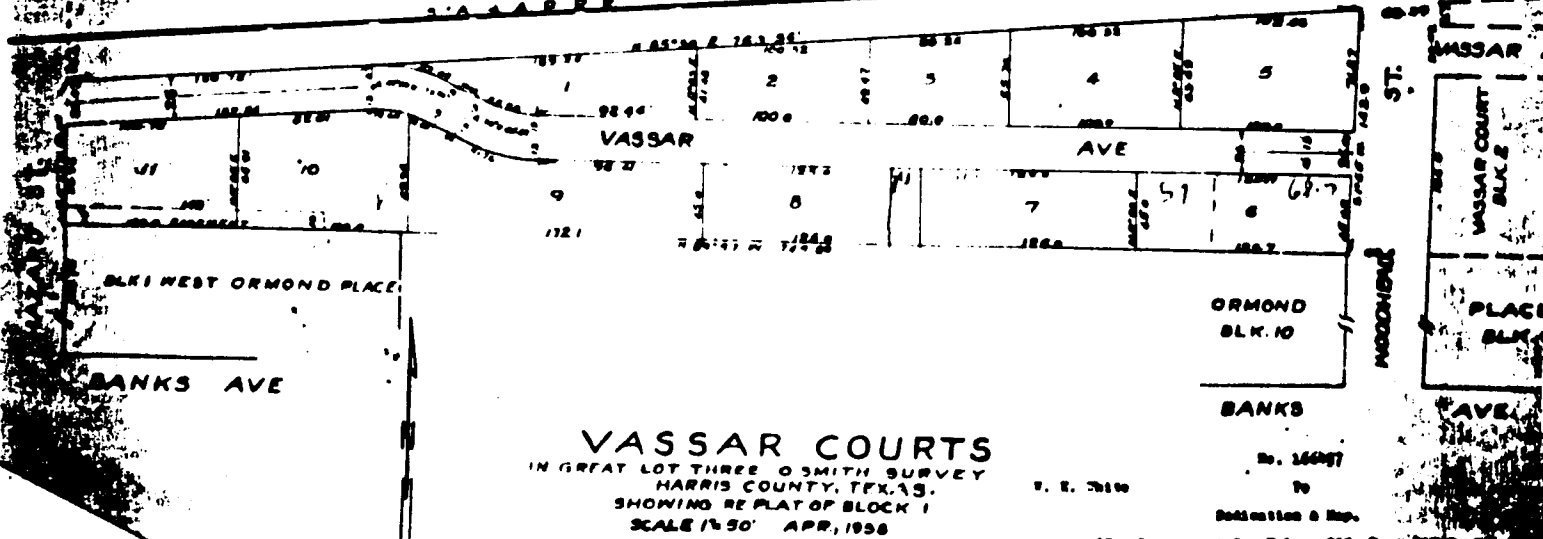
John Smith, Notary Public, in and for Harris Co. Texas. (Seal).
 I do hereby certify that the City Planning Commission of Houston, Texas has
 passed this plan being "Third Addition to Avalon Place."
 Testimony whereof witness the official signatures of the Chairman and
 members of said Commission, this the 20th day of June, 1936.
 J. H. [Name], Chairman. Attest: Geo Barnett, Secretary. (Seal).
 Approved: J. H. Magle, City Engineer.

I, P. F. Ellor, a land surveyor of Texas do hereby certify that the foregoing
 map was made on the ground according to law, and that the limits, boundaries
 corners with marks, natural and artificial, are truly described in the
 accompanying plat.

P. F. Ellor.
 on and sworn June 27, 1936 at 9:15 o'clock A. M.
 on and sworn June 28, 1936 at 11:00 o'clock A. M.
 Henry H. Bodley, Clerk
 County Court, Harris County, Texas.
Henry H. Bodley Deputy.



15/5-B-map



(For Instrument See Volume 228, Page 12)
 Filed for record July 13, 1936 at 3:30 o'clock P.M.
Henry H. Bodley Harris County Court, Harris County, Texas

VASSAR COURTS

1931	1927	1921	1919	1907	1901	1900	1898	1897	1893
1932	1926	1922	1914	1918	1906	1904	1903	1902	1901

1743	1729	1728	1727	1719
1701	1744	1744	1726	1728

WEST

1931	1925	1921	1917	1915	1909	1907	1903	1903	1903
1932	1926	1924	1920	1910	1908	1908	1904	1902	1902

ORMOND PLACE

1785	1746	1748	1728	1728	1729	1725	1725
1744	1740	1736	1730	1726	1726	1726	1726

WEST

1929	1925	1921	1919	1917	1915	1911	1909	1905	1903
1929	1922	1918	1908	1908	1902	1902	1902	1902	1902

ORMOND PLACE

1753	1749	1737	1732	1729	1725	1723
1754	1752	1748	1740	1728	1728	1728

1931	1929	1927
6	1	12

VASSAR COURT

No restrictions

DARO/sej
VASSARCT.RES

VASSAR COURTS

